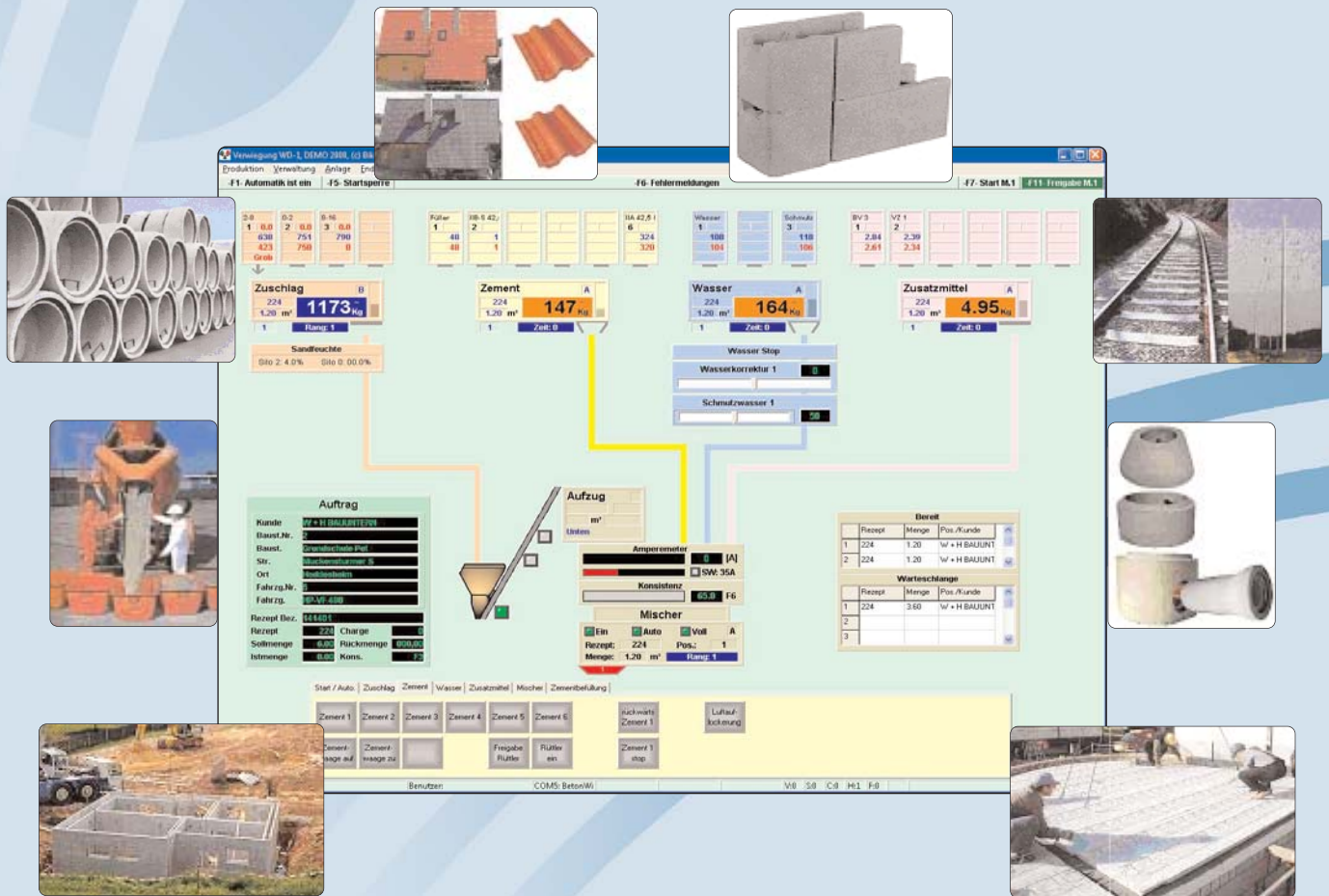


# WD (WD-1 to WD-5)

## Batching / Administration Computer



The screenshot displays a comprehensive control interface for concrete batching. Key components include:

- Material Inventory:** Displays quantities for Zement (147 m³), Wasser (164 m³), and Zusatzmittel (4.95 m³).
- Recipe Management:** Shows 'Auftrag' (order) details and 'Rezept' (recipe) parameters like 'Sollmenge' and 'Istmenge'.
- Production Control:** Features buttons for 'Start', 'Auto', 'Zuschlag', 'Zement', 'Wasser', 'Zusatzmittel', 'Mischer', and 'Zementbefüllung'.
- Monitoring:** Includes 'Amperemeter' and 'Mischer' status indicators.
- Tables:** 'Bereit' (ready) and 'Warteschlange' (queue) tables showing receipt and position data.

The WD is a powerful batching and administration computer which has been developed regarding the latest process and control technologies.

The WD is a single workstation system combining all programme parts required for the production of concrete. The multi-tasking system allows to dose and mix the single components as well as to work with the data administration (editing recipes or statistics, for example) simultaneously. For more complex challenges, the WD can also be operated in a network.

Bikotronic GmbH, Im Hohen Acker 7  
67146 Deidesheim, Germany  
Tel.: +49 6326 96530, Fax: +49 6326 965350  
Internet: <http://www.bikotronic.de>  
Email: [info@bikotronic.de](mailto:info@bikotronic.de)

## Recipe Administration

- Up to 9,999 recipes possible
- A hygrometer recipe number can be created for every recipe number
- Dry and wet mixing time for every recipe

## Concrete:

- For every start face concrete, 9 recipes can be stored for colormix
- For every start core concrete, 3 recipes can be stored for colormix
- Start switching to the next recipe, if more than one recipe is stored in the allocation table
- Switchable: Either all stored recipes are set into the queue or the recipes are queued separately per start
- External concrete order possible

## Material Administration:

- Aggregate administration:  
Presetting of the moisture manual or automatic, change of the silo possible during dosing if a silo is empty, coarse / fine dosing for every component, recipe information according to the components
- Cement administration:  
Silo occupancy, change of silo, coarse / fine dosing, recipe information according to the components
- Additives:  
Silo occupancy, change of silo, coarse / fine dosing, recipe information according to the components
- Water:  
Fresh or recycling water can be entered in % or litres, recipe information according to the components
- Special materials:  
Silo occupancy, change of silo, coarse / fine dosing, recipe information according to the components
- Silo stocks:  
Overview on the silo stocks, inflows can be registered (with delivery note no.), printed and deleted

## Statistics:

- All statistics can be printed or displayed in user-defined time frames

- Statistics of the discharging stations
- Statistics of the daily production
- Consumption statistics with administration of the material outflows (required and actual values with calculation of the difference)
- LOG file - All processes on the system are registered and stored in a LOG file
- This LOG file can be output on the display or on the printer
- Deleting of the statistics either separately selected or by an adjustable time in days (9,999 days max.)

## Additional Features:

- Protocol printout from the database (the protocol printer does not have to run simultaneously)
- All protocols can be saved on external data carriers (CD-ROM, USB stick, network server etc.)
- Languages can be changed with one button (if delivered in a foreign language)
- Logging of all system faults
- Modern surface based on Windows 2000 Professional
- Interfaces to other software systems
- Remote data transmission

## Recovery Set:

To restore all Bikotronic software packages and databases easily if there is a hard disk fault. The recovery can be done by the customer without any problems.

The Recovery Set consists of:

- Bikotronic Recovery CD with operating instructions to restore all Bikotronic Software packages
- Acronis TrueImage software package with manual
- USB stick as storage medium

## Provision of Spare Parts:

The computers of the WD system are based on standard industry PCs. Thus, an easy provision of spare parts is ensured by standardized PC components.

## Remote Maintenance:

Remote maintenance via ISDN, network or Internet



## Additional software packages:

The following software packages can be combined with the WD:

Sand Moisture Measurement  
BTS-WIN

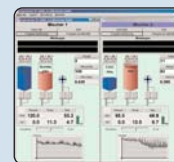


Conductivity or  
microwave  
measurement



Consistency Measurement  
BTK-WIN

Water Batching Computer BT-7000



Microwave  
measurement

# WD (WD-1 to WD-5)

Dosing / Administration Computer